

NITROMAC

SERVICE & GARAGE EQUIPMENTS





ABOUT US

NITROMAC was established in 2011 to design, manufacture and sell service equipment for automotive industry including;

- Hydraulic Rim Repair Machines
- Rim Cleaning and Polishing Machines
- Wheel Alignments
- Tyre Changers
- Wheel Balancers
- Hydraulic Platform Lifts
- Headlight Testers
- Nitrogen Inflators

With its young, experienced and dedicated personnel; Nitromac's mission is to supply the highest quality designed and patented under car equipment with high manufacturing technology available.

From premises located in Izmir/ Turkey, company exports %80 of its production to 56 countries in regular basis and 62 countries in total.

Nitromac has CE, ISO 9001:2008, OHSAS 18001 certificates and 4 different type of rim repair machine patents.



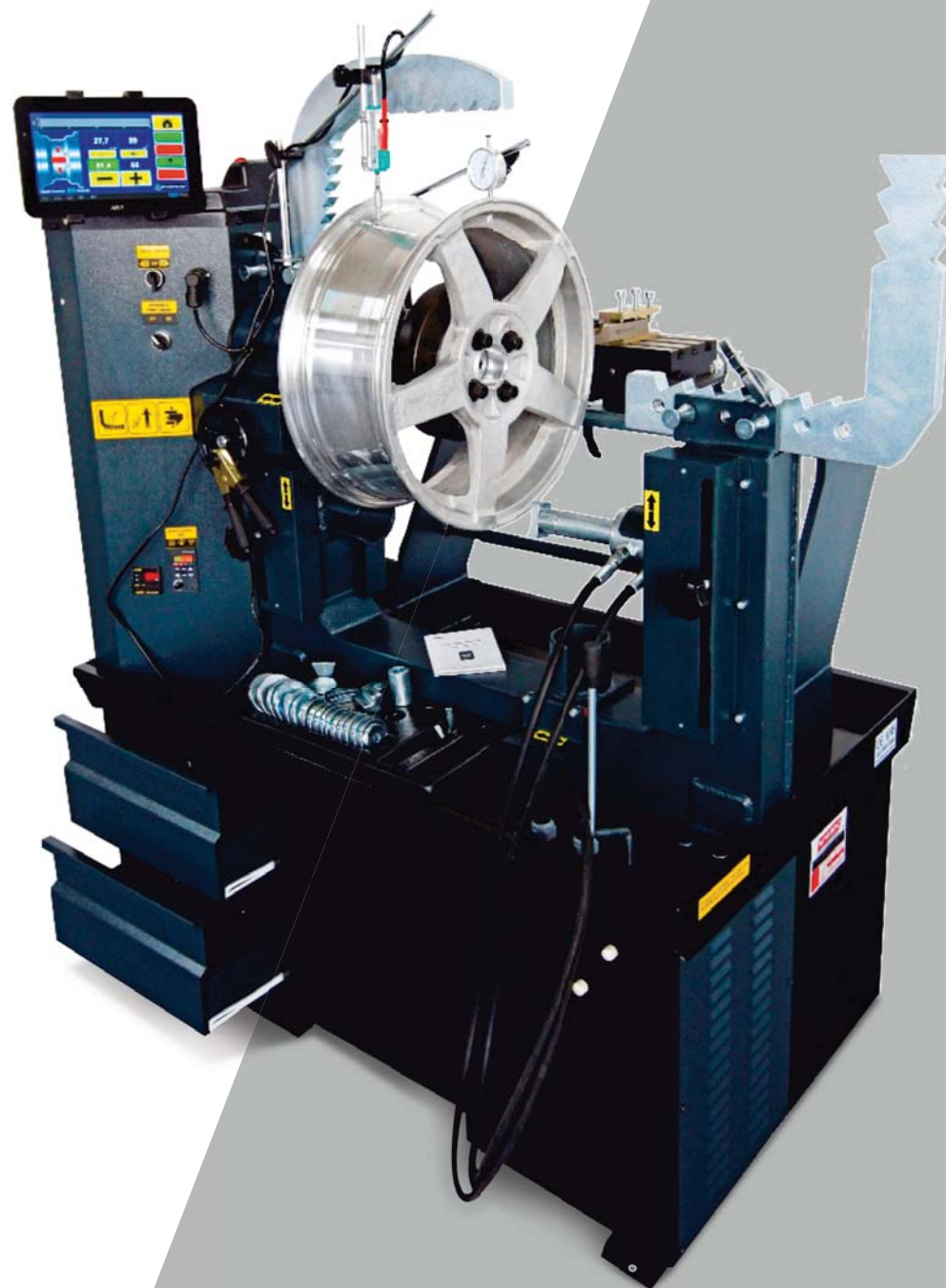


RIM STRAIGHTENING MACHINES

RS28 TAB WL PRO

10" - 28" PRO RIM STRAIGHTENING
MACHINE WITH LATHE AND
TABLET CONTROL SYSTEM

Optional
Tablet System



TECHNICAL SPECIFICATIONS

Rim Diameters	10" - 28" inches
Hydraulic Engine	0,55kW 900 d/d rpm 1h
3 phase-single phase	380V-(optional)220V
Mechanic Engine	0,55kW 900 d/d rpm 1h
3 phase-single phase	380V-(optional)220V
Length	1200 mm
Width	800 mm
Height	1600mm
Weight	440kg
5 Tons Hydraulic Pump Power	

Standard Accessories



DH120
Digital
Thermometer



SCU 435
Speed
Control Unit



HFM 250
2pcs
Halfmoon Set



**Gold
Lathe
Pen**



**1pc
Manual Head
Repair Tool**



**3pcs
Lengthening
Tools**



MMP90
Magnetic
Gauge Tool



220V
Electric
Output



**Plastic
Tool Holder**



**5pcs
Bolt, Nut and
Conical Adapter
Set**



**1 Set
Lathe Tool**



**5pcs
Straightening
Heads**



**1 Set
Piston Holder
Adapter**



**2pcs
Allen Keys**



**1pc
Manuel
Gauge Tool**



**18pcs
Rim
Centering
Adapters**

F24 WL PRO

10" - 24" PRO RIM STRAIGHTENING
MACHINE WITH LATHE



TECHNICAL SPECIFICATIONS

Rim Diameters	10" - 24" inches
	0,55kW 900 d/d rpm 1h
3 phase-single phase	380V-(optional)220V
Mechanic Engine	0,55kW 900 d/d rpm 1h
3 phase-single phase	380V-(optional)220V
Length	1200 mm
Width	800 mm
Height	1600mm
Weight	400kg
5 Tons Hydraulic Pump Power	

Standard Accessories



HFM 250
2pcs
Halfmoon Set



Gold
Lathe
Pen



1pc
Manual Head
Repair Tool



3pcs
Lengthening
Tools



1pc
Manuel
Gauge Tool



18pcs
Rim
Centering
Adapters



Plastic
Tool Holder



5pcs
Bolt, Nut and
Conical Adapter
Set



1 Set
Lathe Tool



5pcs
Straightening
Heads



1 Set
Piston Holder
Adapter



2pcs
Allen Keys

F24 WL

10" - 24"
RIM STRAIGHTENING MACHINE
WITH LATHE



TECHNICAL SPECIFICATIONS

Rim Diameters	10" - 24" inches
Hydraulic Engine	0,55kW 900 d/d rpm 1h
3 phase-single phase	380V-(optional)220V
Mechanic Engine	0,55kW 900 d/d rpm 1h
3 phase-single phase	380V-(optional)220V
Length	1200 mm
Width	800 mm
Height	1600mm
Weight	370kg
5 Tons Hydraulic Pump Power	

Standard Accessories



Plastic
Tool Holder



1pc
Manual Head
Repair Tool



3pcs
Lengthening
Tools



1pc
Manuel
Gauge Tool



18pcs
Rim
Centering
Adapters



5pcs
Bolt, Nut and
Conical Adapter
Set



1 Set
Lathe Tool



5pcs
Straightening
Heads



1 Set
Piston Holder
Adapter



2pcs
Allen Keys

F24

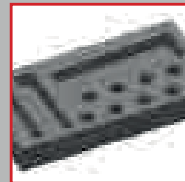
10" - 24"
RIM STRAIGHTENING MACHINE



TECHNICAL SPECIFICATIONS

Rim Diameters	10" - 24" inches
Hydraulic Engine	0,55kW 900 d/d rpm 1h
3 phase-single phase	380V-(optional)220V
Mechanic Engine	0,55kW 900 d/d rpm 1h
3 phase-single phase	380V-(optional)220V
Length	1200 mm
Width	800 mm
Height	1600mm
Weight	280kg
5 Tons Hydraulic Pump Power	

Standard Accessories



Plastic
Tool Holder



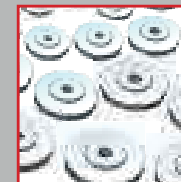
1pc
Manual Head
Repair Tool



3pcs
Lengthening
Tools



1pc
Manuel
Gauge Tool



18pcs
Rim
Centering
Adapters



5pcs
Bolt, Nut and
Conical Adapter
Set



5pcs
Straightening
Heads



1 Set
Piston Holder
Adapter



2pcs
Allen Keys

RS26 WL

10" - 26"
RIM STRAIGHTENING MACHINE
WITH LATHE



TECHNICAL SPECIFICATIONS

Rim Diameters	10" - 26" inches
Hydraulic Engine	0,55kW 900 d/d rpm 1h
3 phase-single phase	380V-(optional)220V
Mechanic Engine	0,55kW 900 d/d rpm 1h
3 phase-single phase	380V-(optional)220V
Length	1200 mm
Width	800 mm
Height	1600mm
Weight	400kg
5 Tons Hydraulic Pump Power	

Standard Accessories



Plastic
Tool Holder



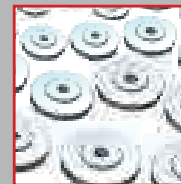
1pc
Manual Head
Repair Tool



3pcs
Lengthening
Tools



1pc
Manuel
Gauge Tool



18pcs
Rim
Centering
Adapters



5pcs
Bolt, Nut and
Conical Adapter
Set



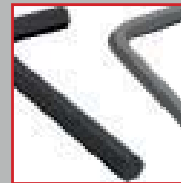
1 Set
Lathe Tool



5pcs
Straightening
Heads



1 Set
Piston Holder
Adapter



2pcs
Allen Keys

RS28 WL

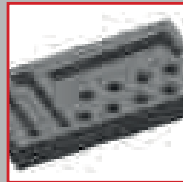
10" - 28"
RIM STRAIGHTENING MACHINE
WITH LATHE



TECHNICAL SPECIFICATIONS

Rim Diameters	10" - 28" inches
Hydraulic Engine	0,55kW 900 d/d rpm 1h
3 phase-single phase	380V-(optional)220V
Mechanic Engine	0,55kW 900 d/d rpm 1h
3 phase-single phase	380V-(optional)220V
Length	1200 mm
Width	800 mm
Height	1600mm
Weight	400kg
5 Tons Hydraulic Pump Power	

Standard Accessories



Plastic
Tool Holder



1pc
Manual Head
Repair Tool



3pcs
Lengthening
Tools



1pc
Manuel
Gauge Tool



18pcs
Rim
Centering
Adapters



5pcs
Bolt, Nut and
Conical Adapter
Set



1 Set
Lathe Tool



5pcs
Straightening
Heads



1 Set
Piston Holder
Adapter



2pcs
Allen Keys

RS30 WL

10" - 30"
RIM STRAIGHTENING MACHINE
WITH LATHE



TECHNICAL SPECIFICATIONS

Rim Diameters	10" - 30" inches
Hydraulic Engine	0,55kW 900 d/d rpm 1h
3 phase-single phase	380V-(optional)220V
Mechanic Engine	0,55kW 900 d/d rpm 1h
3 phase-single phase	380V-(optional)220V
Length	1200 mm
Width	800 mm
Height	1600mm
Weight	430kg
5 Tons Hydraulic Pump Power	

Standard Accessories



DH120
Digital
Thermometer



SCU 435
Speed
Control Unit



HFM 250
2pcs
Halfmoon Set



**Gold
Lathe
Pen**



**1pc
Manual Head
Repair Tool**



**3pcs
Lengthening
Tools**



MMP90
Magnetic
Gauge Tool



**Plastic
Tool Holder**



**5pcs
Bolt, Nut and
Conical Adapter
Set**



Easy 40
Easy
Rim Connecting
Adapter



**18pcs
Rim
Centering
Adapters**



**1 Set
Lathe Tool**



**5pcs
Straightening
Heads**



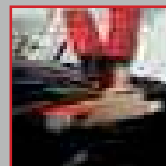
**1 Set
Piston Holder
Adapter**



**2pcs
Allen Keys**



**1pc
Manuel
Gauge Tool**



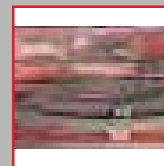
HS280
Infrared
Heating System



OH650
Pro Type
Top Frame Adapter



GVS560
Hydraulic Gear
Valve Set With
3 Cylinder



HFM850
Steel Halfmoon
Repair Adapter Set
8pcs



MMP120
Magnetic
Gauge



**220V
Electric
Output**

RS34 WP

10" - 34"
RIM STRAIGHTENING MACHINE
WITH POLISHING SYSTEM



TECHNICAL SPECIFICATIONS

Rim Diameters	10" - 34" inches
Hydraulic Engine	0,55kW 900 d/d rpm 1h
3 phase-single phase	380V-(optional)220V
Mechanic Engine	0,55kW 900 d/d rpm 1h
3 phase-single phase	380V-(optional)220V
Length	1200 mm
Width	800 mm
Height	1600mm
Weight	400kg
5 Tons Hydraulic Pump Power	

Standard Accessories



Plastic
Tool Holder



1pc
Manual Head
Repair Tool



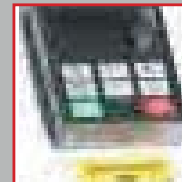
3pcs
Lengthening
Tools



1pc
Manuel
Gauge Tool



18pcs
Rim
Centering
Adapters



SCU 435
Speed
Control Unit



5pcs
Bolt, Nut and
Conical Adapter
Set



1 Set
Lathe Tool



5pcs
Straightening
Heads



1 Set
Piston Holder
Adapter



2pcs
Allen Keys

RIM STRAIGHTENING MACHINES

F30 WP

10" - 30"
RIM STRAIGHTENING MACHINE
WITH POLISHING SYSTEM

Optional
Additional Frame
Adapter Set



TECHNICAL SPECIFICATIONS

Rim Diameters	10" - 30" inches
Hydraulic Engine	0,55kW 1400 rpm 1h
3 phase-single phase	380V-(optional)220V
Mechanic Engine	0,75kW 1400 rpm 1h
3 phase-single phase	380V-(optional)220V
Polishing Engine	2,2 W 3000 rpm
Rims Speed	Digital Speed Controlled 0-300rpm
Height w/pallet	1600mm
Length	1500 mm
Width	800 mm
Weight	465 kg
380-220 Volt, 16A	
5 Tons Hydraulic Pump Power	

Standard Accessories



Plastic
Tool Holder



1pc
Manual Head
Repair Tool



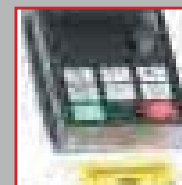
3pcs
Lengthening
Tools



1pc
Manuel
Gauge Tool



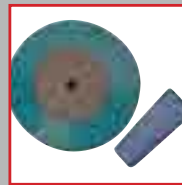
18pcs
Rim
Centering
Adapters



SCU 435
Speed
Control Unit



5pcs
Bolt, Nut and
Conical Adapter
Set



Polishing Disc
and Cream
Medium Type



5pcs
Straightening
Heads



1 Set
Piston Holder
Adapter



2pcs
Allen Keys

RIM STRAIGHTENING MACHINES

SMART REPAIR 22



HYDRAULIC RIM STRAIGHTENING MACHINE

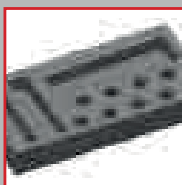
SMART REPAIR 24



TECHNICAL SPECIFICATIONS

	Smart Repair 22	Smart Repair 24
Rim Diameters	10" - 22" inches	10" - 24" inches
Hydraulic Engine	0,55kW 900 d/d rpm 1h	0,55kW 900 d/d rpm 1h
3 phase-single phase	380V-(optional)220V	380V-(optional)220V
Mechanic Engine	NOT INCLUDED	NOT INCLUDED
3 phase-single phase	380V-(optional)220V	380V-(optional)220V
Length	1000 mm	1100 mm
Width	500 mm	500 mm
Height	1400mm	1600mm
Weight	140kg	160kg
5 Tons Hydraulic Pump Power		

Standard Accessories



Plastic
Tool Holder



1pc
Manual Head
Repair Tool



3pcs
Lengthening
Tools



1pc
Manuel
Gauge Tool



18pcs
Rim
Centering
Adapters



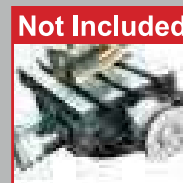
1 Set
Piston Holder
Adapter



2pcs
Allen Keys



5pcs
Bolt, Nut and
Conical Adapter
Set



Not Included

1 Set
Lathe Tool



5pcs
Straightening
Heads

RR1 MOTO

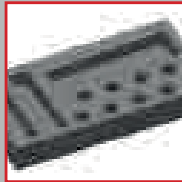
**10" - 24" MOTORCYCLE
RIM STRAIGHTENING MACHINE
WITH LATHE**



TECHNICAL SPECIFICATIONS

Rim Diameters	10" - 24" inches
Hydraulic Engine	0,55kW 900 d/d rpm 1h
3 phase-single phase	380V-(optional)220V
Mechanic Engine	0,55kW 900 d/d rpm 1h
3 phase-single phase	380V-(optional)220V
Length	1200 mm
Width	800 mm
Height	1600mm
Weight	420kg
5 Tons Hydraulic Pump Power	

Standard Accessories



Plastic
Tool Holder



1pc
Manual Head
Repair Tool



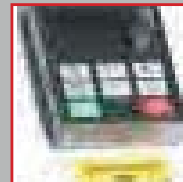
3pcs
Lengthening
Tools



1pc
Manuel
Gauge Tool



18pcs
Rim
Centering
Adapters



SCU 435
Speed
Control Unit



5pcs
Bolt, Nut and
Conical Adapter
Set



1 Set
Lathe Tool



5pcs
Straightening
Heads



1 Set
Piston Holder
Adapter



2pcs
Allen Keys



Moto
Adapter

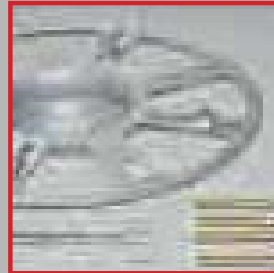
Optional Parts



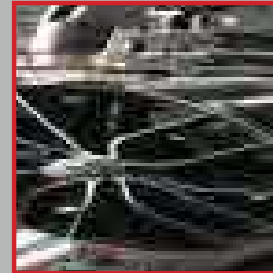
MMP90
Magnetic Gauge
Tool Holder



MMP120
Magnetic Gauge



RR14
Motorcycle Rim
Repair Adapter



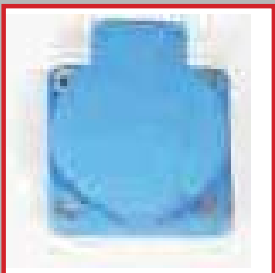
EASY 40
Easy Rim Connecting
Adapter (Connecting
Rims From Center Cone
Without Bolts and Nuts
45 - 130 mm)



PSSET
Polishing Set



PULL 130
Centering Pulley
Any Special Size
(Standarts 18pcs
54mm-76mm This
is Ordering For
Any Size)



PLUG220
220V Electric
Plug Output



OCTOP14
Additional Polishing
Adapter



LAP13
Extra Long Press
Adapter 3pcs



GLPEN
Gold Lathe Pen

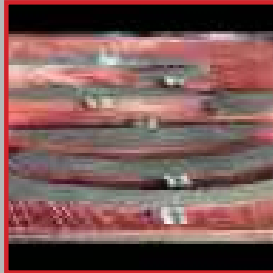


GVS560
Hydraulic Gear Valve
Set With 3 Cyclinder



GVS360
Hydraulic Gear Valve
Set With 2 Cyclinder

Optional Parts



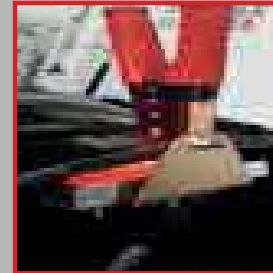
HFM850
Steel Halfmoon
Repair Adapter Set
8pcs



Lathe SET
Lathe Set
With Holders



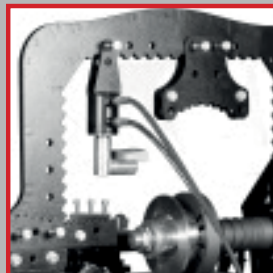
DH120
Digital
Thermometer



HS280
Infrared
Heating System



OH550
Top Frame
Adapter



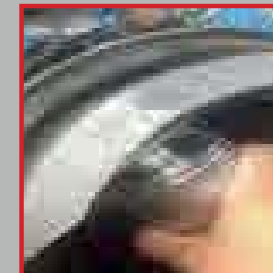
OH650
Pro Type
Top Frame
Adapter



GVS660
Hydraulic Gear Valve
Set With 4 Cylinder



SCU
Shaft Engine
Speed Control Unit



HFM250
Halfmoon Repair
Adapter Set 2pcs
13"-17", 18"-24"

Optional Parts List

PARTS CODE	PARTS NAME	RS28 TAB WL PRO	F24 WL PRO	F24 WL	RS28 WL	RS30 WL	F26 WP	RS28 WP	RS26 WL	SMART REPAIR 22	SMART REPAIR 24	RR1 MOTO
MMP90	MAGNETIC GAUGE TOOL HOLDER	✓				✓						
MMP120	MAGNETIC GAUGE	✓				✓						
PLUG220	220V ELECTRIC PLUG OUTPUT	✓				✓						
OCTOP14	ADDITIONAL POLISHING ADAPTER											
RR14	MOTORCYCLE RIM REPAIR ADAPTER											✓
EASY40	EASY RIM CONNECTING ADAPTER(Conntecting Rims From Center Cone without bolts and nuts 45-130mm)					✓						
PULL130	CENTERING PULLEY ANY SPECIAL SIZE (Standards 18 pcs 54mm-76mm This is for ordering any size)											
LAP13	EXTRA LONG PRESS TIPS ADAPTER 3 PCS					✓						
GLPEN	GOLD LATHE PEN	✓										
PSSET	POLISHING SET						✓	✓				
TABPRO1	TABLET SYSTEM(Pressure Control Unit ,Automatic Measure, Wireless Printer, History, User Database, Thermometer and Lathe Program)	✓										



RIM CLEANING AND POLISHING MACHINES

P32

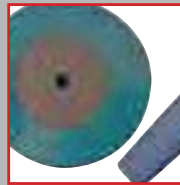
10" - 32" RIM CLEANING
AND POLISHING MACHINE



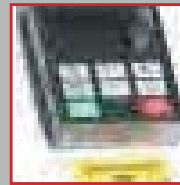
TECHNICAL SPECIFICATIONS

Rim Diameters	10" - 32" inches
Shaft Engine	0,75kW 900 d/d rpm 1h
3 phase-single phase	380V-(optional)220V
Polishing Engine	2,2kW 2800 d/d rpm 1h
3 phase-single phase	380V-(optional)220V
Length	1200 mm
Width	800 mm
Height	1300mm
Weight	240kg

Standard Accessories



Polishing Disc and
Cream
Medium Type



SCU 435
Speed
Control Unit

Optional Accessories

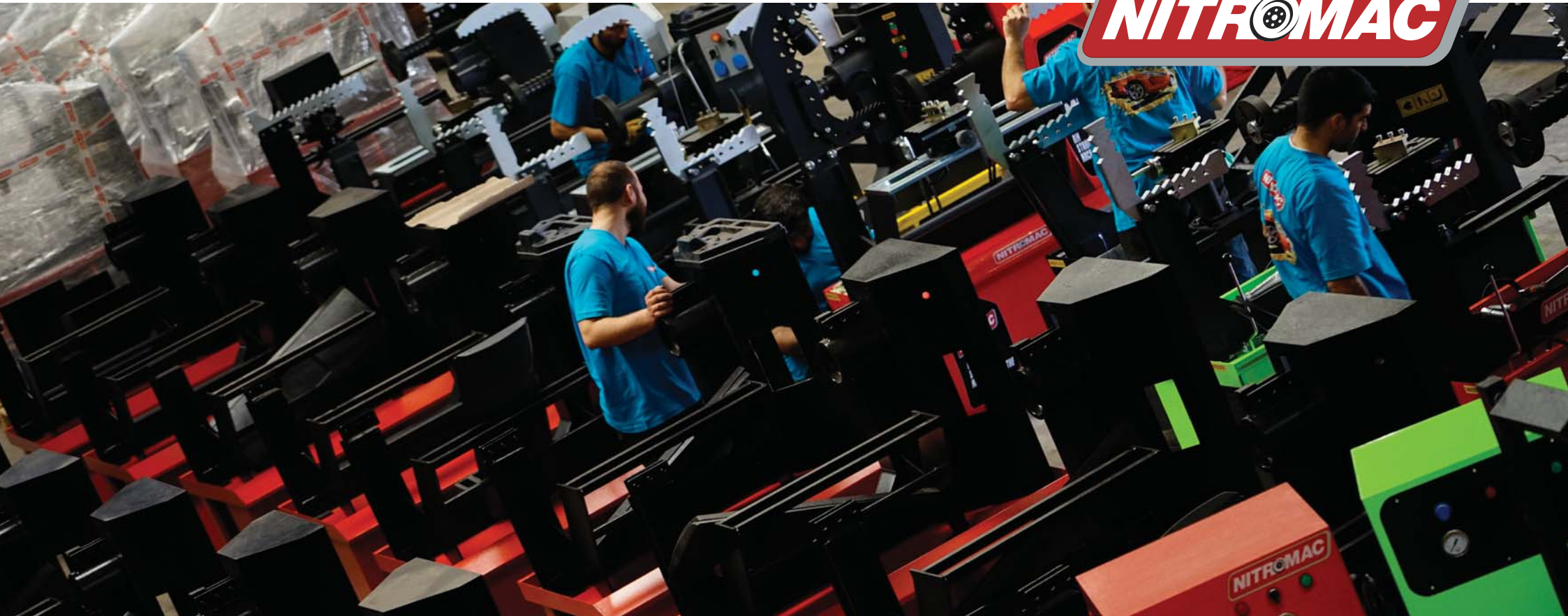


Truck
Adapter



Motorcycle
Adapter

NITROMAC





automechanika
İSTANBUL / TURKEY

- 2012
- 2013
- 2014
- 2015
- 2016



automechanika

FRANKFURT / GERMANY

- 2012
- 2014
- 2016





 autopromotec
BOLOGNA / ITALY

- 2013
- 2015
- 2017



SEMA

SHOW

LAS VEGAS / U.S.A.

- 2012
- 2013
- 2014
- 2015
- 2016
- 2017

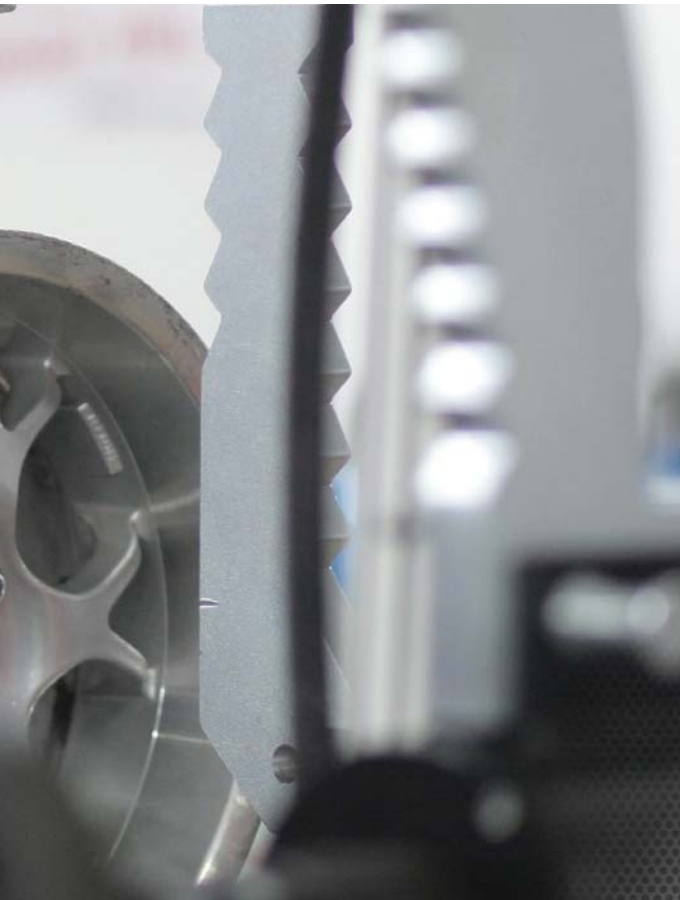




mōtortec
automechanika
MADRID / SPAIN

– 2017





NITROMAC

www.nitromac.com

Ulukent Sanayi Bölgesi 10007 Sokak No:26/B Menemen İzmir

Telefon: +90 232 325 90 90 Faks: +90 232 325 00 50 E-Posta: info@nitromac.com

